



Travel, Golf & Spa





Clockwise from the top: Main Lobby, Hotel Jen Tanglin; Poolside at The Hilton Batang Ai; Travel by longboats at Batang Ai.



Dream Comes True for British Airways

British Airways (BA) recently celebrated the arrival of its brand new Boeing 787-9 Dreamliner into Kuala Lumpur International Airport (KLIA). Kuala Lumpur became the third destination on the airline's network to welcome the latest and most technologically-advanced aircraft featuring the next generation First (First Class). The state-of-the-air Boeing 787-9 Dreamliner will become the mainstay of the BA fleet over the next few years and is part of a RM32 billion programme to elevate flying comfort in the air and on the ground. First has been specifically created for this aircraft and comprises eight seats compared to 14 seats available on other BA long-haul aircraft. The aircraft also includes 35 Club World (Business Class), 25 World Traveller Plus (Premium Economy) and 154 World Traveller (Economy Class) seats for a total capacity of 214.

www.ba.com

New Generation Hotel Jen Tanglin Singapore Opens

Hotel Jen Tanglin Singapore (previously Traders Hotel Singapore on Cuscaden Road) has opened and rebranded after an extensive renovation which cost S\$45 million. The 565-room property with six room types ranging from 26m² superiors to the 75m² premier suite feature contemporary Singapore-inspired designs, walk-in showers, king-sized beds, complimentary wi-fi and USB chargers. In addition, executive suites include pull-out sofa beds and small pantry containing a microwave and fridge. Facilities include a 17th-floor Club Lounge with open views of the surrounding neighbourhood, Jen's Kitchen Café On-the-Go, J65 serving South East Asian cuisine, a gym, health club, outdoor pool, jacuzzi, sauna, steam rooms and pool bar. Hotel Jen Tanglin has introduced a 'Jen's heart map' where staff and guests can share city tips and recommendations.

www.hoteljen.com/taglin

Name Changer for Batang Ai Resort

Malaysian company Aiman Agro Park has purchased the Hilton Batang Ai Longhouse Resort from Tradewinds Hotels and Resorts and is managing it through its subsidiary, Planet Borneo Lodge Management. The 100-room property has been renamed Aiman Batang Ai Resort and Retreat and an extensive refurbishment is planned for the property located on the shores of Batang Ai near the remote Batang Ai National Park in the far south of the Malaysian state of Sarawak on the island of Borneo.



Clockwise from the top: Keemala Birds Nest Villa, Keemala Tent Pool Villa and the lobby exterior



Keemala at Kamala Opens

Located within the Kamala woodlands of Phuket, Keemala embraces a Thai cultural philosophy and blends the fictional history of four indigenous clans with an upscale resort. Its 38 villas have been inspired by stories, cultures and traditions of these Phuket settlers. Keemala offers four villa choices complete with private pools and either sea or mountain views. The 16 'Clay Pool Cottages' reflect the earthiness of the 'Pa-Ta-Pea' (earth) farming clan who believed in earthly connections. With a selection of one and two-bedrooms, these cottages are from 126m² to 180m² in size. The tent-like structure and wildlife-inspired prints of the seven 'Tent Pool Villas' reflect the nomadic 'Khon-Jorn'

(wanderer) clan who were foragers, performers and traders. With a master bedroom and separate living space, these villas are 140m². The seven imaginative 'Tree Pool Houses' use building techniques to give the impression they're suspended from trees to represent the 'We-Ha' (sky) universe worshipping clan. This quirky two-floor villa design is 169m² to accommodate up to four guests. The 'Rung-Nok' (nest) community inspired the design of the eight 'Bird's Nest Pool Villas' and offer the most exclusive experience covering 185m². Resort facilities include the Mala Spa and four dining outlets to make it a perfect couples' retreat (young adults of 14 years upwards are also welcome).

www.keemala.com



Strategic Acquisition for AccorHotels

AccorHotels is set to acquire FRHI Holdings Ltd (FRHI), parent of Fairmont, Raffles, and Swissôtel, for US\$2.9 billion and in the process add 155 properties to the brand (of which 40 are under development). FRHI's properties span 34 countries on five continents, with 42 properties in North America, two in South America, 26 in Europe, 17 in Africa/Middle East and 28 in Asia-Pacific. The acquisition gives AccorHotels a strong presence in North America and also a high-end luxury brand in Raffles as well as some of the world's most iconic hotels, including Raffles (Singapore), The Savoy (London), Shanghai's Fairmont Peace Hotel, The Plaza Hotel (New York) and Fairmont (San Francisco). The deal offers AccorHotels global leadership in luxury hotels, a key segment in terms of geographic reach, growth potential and profitability, for long-term value creation. With nearly 500 luxury properties, AccorHotels will become one of the key global players in this segment and will be able to offer the most profitable management contracts and the best growth potential in many markets. Qatar Investment Authority and Kingdom Holding Company of Saudi Arabia are set to become major shareholders, with 10.5% and 5.8% of the share capital respectively.



Revere in the Enchanted

Berjaya Langkawi Resort's Premier Suite On Water, the only individual private water chalets found in the magical island of Langkawi – invites you to a magical sojourn where traditional elegance blends seamlessly with urban sophistication. Immersed in Malaysian heritage, wrapped in idyllic emerald waters and abundant rainforests, these 65-square-metre suites comes with increased space and comfort, including a semi-outdoor lounge and Jacuzzi; as well as nature-themed colours, style and lighting, setting another benchmark in luxury and exclusivity. Be served with personalised service and wake up to warm sunshine with breakfast on its sea-fronting balcony.

Absolute serenity is guaranteed with only sun, seas and stars to intrude.



Premier Suite On Water Romantic Package

3D/2N
MYR 3,828.00
per package

Package
Includes

2-night accommodation. 2-day breakfast served in-room.
1-night set dinner at award-winning Pahn Thai Restaurant.
50 minutes Aromatherapy for couple.

Terms & Conditions | Stay period valid from 1st May 2016 - 30th April 2017 . Rate is nett price inclusive tax and service charge. Peak period surcharges apply. Extension night at MYR1,573 per night. Offer is not applicable for blackout dates, LIMA 2017 and other special offers. Terms and conditions apply.

For reservations, please call +60 (4) 959 1888 or
email langkawi.rsvn@berjayahotel.com



BERJAYA HOTELS & RESORTS (BHR)

a division of Berjaya Land Berhad (201765-A)

Corporate Office | Level 15 West, Berjaya Times Square Hotel, Kuala Lumpur, 1 Jalan Imbi, 55100 Kuala Lumpur, Malaysia

📞 + 60 (3) 2142 9611

📠 + 60 (3) 2144 2527

✉ bhr@berjayahotel.com

www.berjayahotel.com



Singapore barrels on in offering travellers some of the region's most sophisticated accommodation. David Bowden checks in to check out five of the island's iconic properties ranging from great family accommodation to lively and elegant designer properties.

Sophisticated Singapore



Grand East Coast Address

The Grand Mercure Roxy's has been recently refurbished with a refreshingly contemporary ambiance that's perfect for families. Alternatively, a rejuvenated Executive Lounge offers business travellers personalised service, private check-in, complimentary breakfast, refreshments and evening cocktails and canapés. Rooms have a 3m-long workbench, ergonomic chair and complimentary wi-fi to provide an enriching work area. Hearty meals are served in Breez Restaurant and Bar overlooking the pool. Diners can savour Cantonese delicacies at Jia Wei Restaurant as well as breakfast and à la carte in the hotel's all-day dining concept, Feast@East. Leisure facilities include a pool and gym while massages can be arranged. The hotel is accessible to East Coast attractions like historic Katong, Marine Parade Food Centre, East Coast Park and Parkway Parade Shopping Centre. The hotel is especially popular for those on flight stopovers and a shuttle connects to all terminals.

VERDICT

This property offers refined services in a landscaped setting with fresh sea breezes flowing from the bay.

www.grandmercuroxy.com.sg

Oasia in an Urban Jungle

Guests are greeted in the lobby of the 428-room Oasia in Singapore's near-city location of Novena by chunky granite and rustic timber. This natural earthiness flows throughout creating an urban oasis. Oasia Hotel Singapore is a contemporary hotel brand of the Far East Organisation and the first to be branded as such. Rooms are elegantly furnished with designer Asian interiors. State-of-the-art televisions, internet connectivity and i-Pod compatible sound systems entertain guests. Natural elements flow through The Club Lounge on the 22nd floor where ceiling-to-floor windows offer panoramic views. Global wines are a feature of complimentary evening cocktails and canapés for Oasia Club guests. A private pool is available here while the eighth floor pool is for all guests. Oasia is located near retail precincts like Novena's Square 2 and Orchard Road is accessible via MRT. The hotel is ideal for those visiting Novena Specialist Centre and Medical Centre and Tan Tock Seng Hospital.

VERDICT

Oasia is a vibrant, modern hotel just out of the CBD but close to one of Singapore's medical hubs.

www.oasiahotel.com



Hillside Heritage

There's something comforting about returning to the past, to places that we're familiar with or the historic notion that life was better in the 'olden days'. It's refreshing to immerse oneself in an old fashion bathtub, lounge in deep armchairs and have staff who have been working in a hotel for much of their life recognise you and remember your beverage of choice. Live life a little and check into one of Asia's grandest hotels; Hotel Fort Canning. The hotel was the British Far East Command at the beginning of World War 11 and has been preserved and sensitively restored. Its lush greenery ensures a cosy oasis and yet, it's just minutes from Orchard Road. With 86 stylised rooms and suites, personalised service is assured.

VERDICT

The hotel is perfect for those seeking an exclusive address plus gracious facilities and services.

www.hfcsingapore.com



So Singapore, So Sofitel

French flair meets surprising Singapore at the Sofitel So Singapore located in the city's CBD. The heritage property is a chic union of culture and cuisine and art and architecture within an iconic building dating back to 1927. Sofitel So is based upon the creativity of a design house and a fashion house with the end result being an explosive mix of art, design and fashion. Guests will keep discovering new design elements throughout the guestrooms and public spaces to make it most appealing to design-conscious travellers. This luxury boutique property is home to Xperience Restaurant where chefs create French-inspired dishes in a space that delights impressionable diners. The sixth floor HI-SO rooftop pool bar isn't your typical funky rooftop outlet but it has its moments.

VERDICT

French fashion and flair unite with Singapore's style sensibilities to create a unique one-off design hotel that will appeal to fashion-driven travellers.

www.sofitel.com



Landmark Marriott

Like real estate, location is important for prestigious hotels and Singapore hotel addresses don't get much better than Orchard Road. The Singapore Marriott Hotel has a prime location at the intersection of Orchard and Scotts Roads. Renovated a few years ago, the latest technological ensures guests stay in touch with the world while relaxing in the lap of luxury. All 393 guestrooms offer a sense of space with large windows in the unusually shaped rooms due to the buildings circular architecture. Ergonomically-designed workstations offer high-speed internet and universal plugs. Marble-lined bathrooms with spacious showers have ledges for relaxing under rainforest showerheads. Marriott Café offers innovative buffets and sparkling wine Sunday buffets. The 30-storey hotel is a Singapore icon at retail crossroads with Tangs, ION Orchard and Isetan all nearby.

VERDICT

Centrally-located with work-friendly rooms, excellent food and beverage outlets and custom-made fitness programmes offered in The Retreat.

www.marriott.com



SPARKLING HILL, CANADA

Sparkling Hills Resort in Canada's British Columbia has long been considered one of the world's top mountain destinations known for its elegant interiors and unsurpassable mountain scenery overlooking Lake Okanagan. Guests enjoy the natural surroundings as well as luxuriating in the KurSpa. www.sparklinghill.com



THE CHEDI ANDERMATT, SWITZERLAND

Andermatt is a typical Swiss alpine village and the premium address in town is The Chedi Andermatt with its elegant and stylish ambiance which blends in with the natural surroundings. Nature is reflected in the hotel's luxurious design of alpine chic with Asian flair. www.thechedi-andermatt.com



BELMOND SANCTUARY LODGE, PERU

The finest accommodation at Peru's sacred Machu Picchu at 2,430m is the deluxe Belmond Sacred Sanctuary Lodge. It is also the only hotel adjacent to Peru's majestic world heritage Inca citadel and is located within orchid gardens visited by exotic birds. Enjoy dining and massages in the crisp mountain air. www.belmond.com

Ain't No Mountain High Enough

While many travellers gravitate to beachside destinations for their holidays, for others, there ain't no mountain high enough for relaxing in the cool air, taking to the slopes for some piste action and some après piste socialising, doing some fly fishing, communing with nature or seeking spiritual guidance.



VERANDA CHIANG MAI, THAILAND

The Chiang Mai Veranda High Resort offers a Zen-like experience and accommodation that is both cultural and contemporary in design. The resort of just 80 rooms is located in the cool forested hills on the outskirts of Chiang Mai in the north of Thailand.

www.verandaresortandspa.com



MGALLERY SONGSAM RETREAT, CHINA

MGallery Songsam Retreat is a place for those seeking mythical Shangri-La 3,000m above sea level in the town of Shangri-La (also known as Dijiang) in Yunnan Province, southwest China. This serene 75-room property is adjacent to the Song Zan Li Si Temple built in 1679.

www.mgallery.com



DALAT PALACE, VIETNAM

Dalat Palace Luxury Hotel and Golf Course is the premiere address in the former French hill station of Dalat located high in Vietnam's Central Highlands. Overlooking scenic Xuan Huong Lake and 18-hole golf course, it combines colonial ambiance, French flair and renewed Vietnamese vigour.

www.dalatresorts.com



NOVOTEL BOGOR, INDONESIA

This hill retreat above Jakarta showcases old Javanese architecture and meticulously-maintained tropical gardens. The 180-room, Novotel Bogor Golf Resort is home to Capriccio Restaurant where wood-fired pizzas are perfect for the cool mountain weather. Guests can play golf and relax in the Oasis Spa.

www.novotelbogor.com

Emirates Exemplary Experience

Hospitality Asia spoke to Andrew Bunn, Country Manager, Singapore, Malaysia and Brunei Emirates Airline for the latest on the airline.



What are the challenges and opportunities for Emirates?

Despite challenging economic times, Bunn claims there continues to be resilient global demand for travel. As more airlines innovate and build on competitive advantage, he sees more market competition, which Emirates believes is good for growth. As a game-changer, the challenge for Emirates is to look into ways to continually enhance offerings while maintaining the Emirates brand synonymous with world-class experiences. This means exploring opportunities to expand its network and to work with partners, travel agents and tourism boards to further expand market reach.

As for the passenger segment, Bunn claims this can no longer be divided into corporate and leisure but expanded to include other audiences with growth potential. For example, family travel is an increasingly exciting segment as consumers value time spent with family. In fact, over four million children travel on Emirates annually.

With that in mind, Emirates has built on its family offerings. Parents can enjoy the comfort and amenities offered like ice in-flight entertainment to onboard wi-fi while being at ease knowing that something is in store for their children. They can access over 25 dedicated television channels and over 40 classic Disney movies. There are also special childrens' meals and also exclusive Fly with Me Toys and Lonely Planet activity bags so they can learn and play.



Andrew Bunn has nearly 20 years experience and expertise in aviation. He spent 17 years with Lufthansa German Airlines in various leadership positions in Europe and Asia including being the General Manager Hong Kong, Southern China and Taiwan before joining Emirates in April 2014. He explains his philosophy on aviation, business and Emirates as: "I truly believe there is a necessity to understand cultural nuances of each market. While having a great product is important, knowing what the customer needs are and how to create an unforgettable experience is key. We want people to continue choosing Emirates and for that, we must be innovators. We have to think about ways we can enhance experiences through comfort, choice, convenience and connectivity. That requires determination and people with passion in what they do."



How does Emirates stay ahead of the game?

Innovation is something that Emirates pays attention and detail to, explains Bunn. “We are constantly looking at ways to enrich and enhance customer experience; this can be sensed in the people we employ like our cabin crew who are multicultural, speak 60 languages and are friendly. It’s also reflected in the overall on ground to onboard offerings provided.”

On ground, the recently refurbished Emirates KLIA lounge which is complete with gourmet halal cuisine, comfortable seats and a well-equipped business centre, has given the airline an edge. Onboard, passengers dine on award-winning cuisine, rest in comfortable seats, and tune in to new generation entertainment while accessing on-board wi-fi.

Keeping up-to-date with technology is also an imperative. “Last year, we launched an Emirates app for Apple Watch to provide real-time information to passengers,” adds Bunn.

Emirates also recognises that travellers are keen to learn about new cultures so they are expanding their network. Bunn continues: “Malaysians, love Europe and we

offer great connectivity there with 38 destinations. We also offer routes to the Americas with a recent destination being Orlando, which is popular for its theme parks.”

What new routes are planned?

Emirates currently flies to 150 destinations in 80 countries with Panama City a recent destination. This is the airline’s first destination in Central America and also the world’s longest non-stop flight at over 17 hours. In May, Emirates expanded services to mainland China with flights to Yinchuan and Zhengzhou.

What new activities are expected for the region in 2016?

Emirates is a passionate supporter of world sport. “We will sponsor the Malaysian Open for the 11th year and use it as a platform to connect with partners, industry players and customers. Emirates is also delighted to sponsor Formula One for its fourth year with the Malaysian Grand Prix in October.

Any partnerships planned?

Emirates recently announced a code share with Malaysia Airlines to provide improved connectivity

around the globe. Malaysia Airlines’ customers will have access to Emirates’ global network. Emirates’ customers will have access to Malaysia Airlines’ Asia-Pacific network with up to 300 daily regional departures.

With Malaysia being one of the airline’s key markets and a much sought-after destination for its diverse offerings, Bunn is also looking into a partnership with Tourism Malaysia.

Why should passengers fly Emirates?

Emirates combines a great product with excellent service for all passengers. Who a seamless experience from on ground to in-flight. The introduction of the Emirates’ new two-class A380 aircraft for daily flights between Kuala Lumpur and Dubai is another reason. Seating 615 passengers (58 Business Class and 557 Economy Class), it provides increased capacity, enabling more Malaysians to enjoy Emirates’ A380 aircraft.

Emirates is also provides the gateway to Dubai, the airline’s home base. Dubai is no longer just a stopover but a destination.

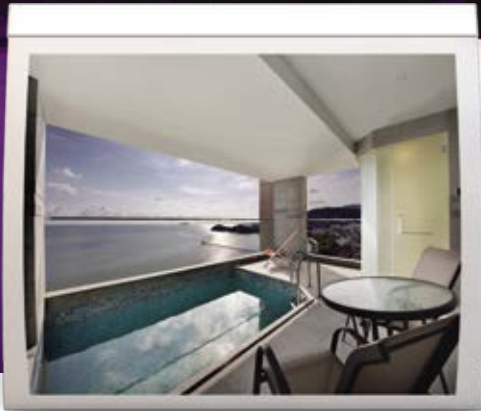
New developments in economy and business class?

Emirates has recently expanded its food and beverage selection which includes introducing premium wines, like Dom Pérignon Vintage 2005 and Dom Pérignon Vintage Rosé 2003.

Emirates ice in-flight entertainment offers not only larger but the world’s largest in-seat screens in Economy Class at 13.3”. Business Class screens of 20” remain one of the industry’s largest. This means 2,186 channels of on-demand entertainment and 1,230 music channels in 14 languages.

LEXIS SUITES®
PENANG

LUXURIOUS RESORT
BY THE BEACHFRONT



LEXIS SUITES PENANG

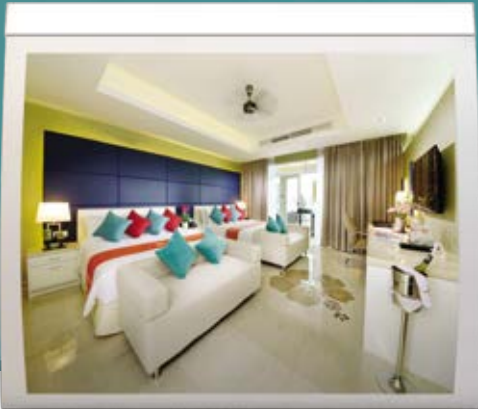
LEXIS SUITES PENANG 28, Jalan Teluk Kumbar, 11920 Bayan Lepas, Pulau Pinang, Malaysia.

Tel +604 628 2888 Fax +604 628 2889 E-mail reservations@lexissuitespenang.com Website www.lexissuitespenang.com

A property of KL Metro Group.

Managed by Lexis Hotel Group 344284-T

OPEN UP TO A WHOLE NEW EXPERIENCE
OF ICONIC ABOVE THE SEA LIVING



LEXIS HIBISCUS PORT DICKSON

LEXIS HIBISCUS PORT DICKSON 12th Mile, Jalan Pantai, 71250 Pasir Panjang, Negeri Sembilan, Malaysia.

Tel +606 660 2626 Fax +606 660 2699 E-mail eventmgr@lexishibiscuspd.com Website www.lexishibiscuspd.com

A property of KL Metro Group.

Managed by Lexis Hotel Group 344284-T

UBIKA WINE RESORT SPA

UKIKA Day Spa in the Crowne Plaza Hunter Valley Resort, like its Sanskrit name which means 'to grow', adopts the philosophy to plant a seed and help nurture it for continual physical, emotional and spiritual growth. The spa menu offers treatments that hydrate, nourish, restore and rejuvenate in beautiful surroundings of grapevines and golf fairways. One of the most popular of the 16 treatments rooms is the Sanctuary Suite that can accommodate 12 guests and is especially popular with bridal parties. www.ubika.com.au



DHATRI SPA PULLMAN PHUKET

Peace, rejuvenation and relaxation prevail at the Pullman Phuket Arcadia situated along Naithon Beach facing the Andaman Sea on Phuket Island. The spa offers traditional Thai massage and specialised aromatherapy treatments. Enjoy Guinot facials, jasmine and oatmeal scrubs and aloe vera wraps. www.pullmanphuketarcadia.com



SACRED INCA TREATMENTS AT BELMOND RIO SAGRADO

Located in Peru's Sacred Valley, the Spa Mayu Wilka is truly a sacred sanctuary for the senses. The stone and wooden structure by the Urubamba River exudes a serene spirit with features such as an indoor/outdoor jacuzzi, steam room and sauna. Located at high altitude and close to Cusco and the fabled Machu Picchu, the 60-minute 'Altitude Acclimatisation' massage is popular along with local therapies such as wraps like 'Inca gold' or scrubs of 'Andean Cacao' and 'Quinoa'. www.belmond.com



FRENCH-INSPIRED KRABI SPA

It's no surprise that the French-managed Sofitel Phokeethra Krabi Resort and Spa chose L'Occitane products from the South of France for their beauty and spa treatments. So Spa with L'Occitane offers a range of enticing holistic treatments in this Thai-designed spa within metres of the sands of its Andaman Sea location in southern Thailand. All treatments rooms are located near a central pond with a stone Buddha feature. The 60-minute Aromachologie massage is designed to increase circulation, release tension and to revitalise the body. www.sofitel.com





ONE OF THE WORLD'S BEST

This club is home to what's considered one of the world's best nine-hole courses. It is located on the island's west coast near Currie (population 746) and features idyllic golf landforms amid coastal dunes, ocean vistas, wind-blown vegetation and challenging weather.

KING ISLAND GOLF and BOWLING CLUB

Owen Smith Drive, Currie, King Island, Tasmania 7256, Australia.
Tel: +61 3 6463-1126 www.golfkingisland.com



LIGHTHOUSE LOCATION

Just opened in October 2015, Cape Wickham offers a mix of coastal and inland holes with dramatic views of Bass Strait and the historic Cape Wickham Lighthouse. Golfers are already impressed with the rocky coastline and challenging weather conditions of a course that could soon be one of the world's best public courses. On-site accommodation and a clubhouse perched above the 18th-hole will soon open.

CAPE WICKHAM LINKS KING ISLAND

Cape Wickham, King Island, Tasmania 7256, Australia.
Tel: +61 3 6463-1200, www.capewickham.com.au



DUNES BY THE OCEAN

The initial nine-holes of this picturesque course opened in October 2015 with the course fully opening in early 2016. Overlooking the Great Southern Ocean the 6,365m long, par 72 course is similar to Scotland's great golf links. The classic fourth hole is surrounded by rugged coastal rocks and a moody sea with a shallow but wide green perched on a small peninsula. Accommodation is provided in nearby Currie at Ocean Dunes King Island Hotel.

OCEAN DUNES KING ISLAND

365 North Road, Loorana, King Island, Tasmania 7256, Australia.
Tel: +61 3 6462-1633, www.oceandunes.com.au

RADICAL HOT HATCH FROM VW

The Golf R Mk7 is the radical new advance on the Golf GTI. Equipped with four-wheel drive system and new styling, the Golf R will appeal to those looking for radical new performance. Drivers will notice a new front bumper, lights and larger exhaust pipes as well as changes to the interior. A new EA888 two-litre turbocharged and direct-injected four-cylinder engine provides greater output.

www.volkswagen.com.my



DEFENDER OF THE ROAD

A special edition Land Rover has been released by Jaguar Land Rover Malaysia. The model is primed with a Limited Edition Accessories Package of 13 features and is based upon the Defender Double Cab. Items include a roof rack, A-frame protection bar, set of four spotlights, special black paint body and a set of five off-road tyres. Each special edition vehicle will be customised to order. Current Land Rover Defender owners can also purchase the kit.

www.jaguar.com.my



NEW BMW SPORTS

BMW has released a new variant of the 1 Series hatchback model range with the introduction of the BMW 118i Sport. Using BMW's 1.5-litre turbocharged three-cylinder petrol engine, all power is transmitted to the rear wheels via an eight-speed automatic transmission. It delivers high fuel economy of 5.1 litres per 100km.

www.bmw.com.my



NEW ERA MAZDA

The new Mazda CX-3 offers new levels of versatility, freedom and driving enjoyment. With Mazda's KODO design philosophy, the Mazda CX-3 is designed and engineered to evoke emotions by closely matching human sensibilities. Skyactiv energy efficient technology delivers inspiring performance with the ultra-efficient two-litre Skyactiv-G engine and Skyactiv-Drive, six-speed automatic transmission. www.mazda.com.my

